

Solar AGM Battery 12V65ah

Basic Info

- Model NO.: 6FM65
- Usage: UPS, Electric Power, Lighting
- Discharge Rate: Low Discharge Rate
- Electrolyte: Acid
- Rechargeable: Chargeable
- Voltage: 12V
- Approx Dimension(mm): 348*167*178
- Terminal: T6
- Specification: CE, SGS
- HS Code: 850720000
- Type: Lead-Acid Batteries
- Nominal Voltage: 12V
- Shape: Square Battery
- Installation: Fixed
- Model No.: 6FM65
- Capacity: 65ah/20hr
- Total Weight: 19.2kg
- Trademark: TIGER HEAD
- Origin: Guangzhou, China

Product Description



VRLA-AGM BATTERY

Guangzhou Tiger head Vrla-AGM Batteries indicate Valve-Regulated Lead-Acid batteries with Absorbed Glass Mat(AGM)separators. By using the matured technology invented more than half century.now we are able to design,build and market high quality,long life VRLA-AGM batteries from 2V to 24V,and 0.5AH to 3500AH.Tiger Head is now one of the fastest developing lead-acid battery manufactures in China

General Purpose Applications:
ALL Purpose battery Needs

UPS	EPS	Emergency Light	Signal	Security System
Electronic Equipment	DC Power Supply	Tele-Communication	Power System	Network Communication

Deep Cycle Application:

Electric Tools	Lawn Mowers	Golf Trolleys	Portable Apparatus
----------------	-------------	---------------	--------------------

Electric Toys	Illumination Light	Wheel Chairs	Medical Equipments
---------------	--------------------	--------------	--------------------

Solar/Wind/Hydro Power System Applications:

Green Energy Systems	Measurement Stations	Pump System	Signal Station	Emergency Lighting	Railway Crossing	Traffic Lights
Street Lighting	Lawn Lamp	SOS Pillars	Camping	Boats or Buoys	Communication System	

Long life Standby Application:

UPS	EPS	Emergency Light	Railway Signal	Electronic Apparatus
Communication DC Power	Tele-Communication	Power System Communication	Network Communication	Marine

High Rate Discharging/UPS Applications:

UPS(High rate)	High Power Backup	Starting System
Power Tools	Emergency Lighting	Electric Starting

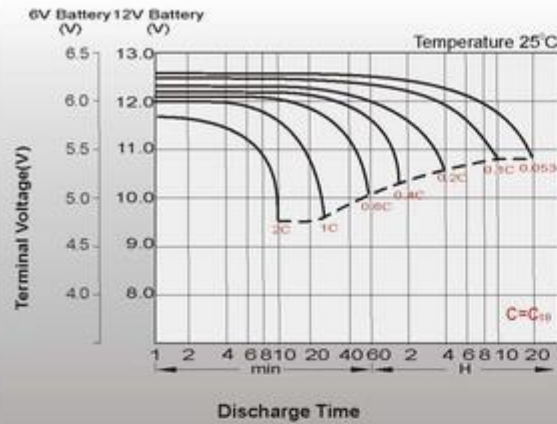
Front Terminal/Telecom Applications:

For Standard 19 Inch or 23 Inch Power Cabinets	Network Connection Equipment	UPS
Power Station Systems	Railway and Marine Systems	

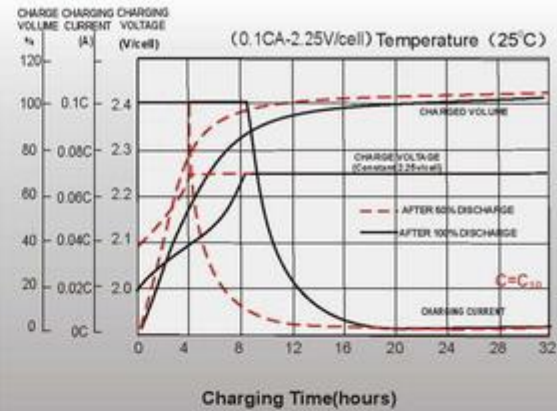
FEATURES

- .Maintenance-free, no water adding required
- .Sealed Valve-Regulated
- .Spill proof/leak proof
- .Deep discharge protection
- .Plate grids from lead-calcium alloy, free of antimony
- .No corrosion
- .Installs vertically or horizontally
- .Low gassing(unless overcharged)
- .Good cycling and stationary performance
- .Long shelf life
- .Rugged and vibration-resistant

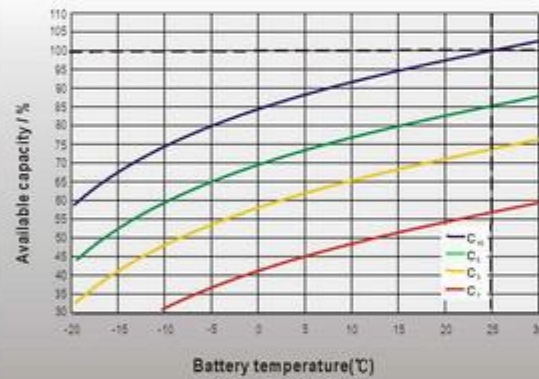
DISCHARGE CHARACTERISTICS



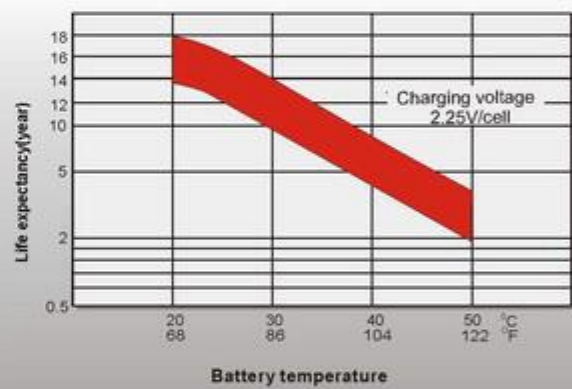
CHARGING CHARACTERISTICS



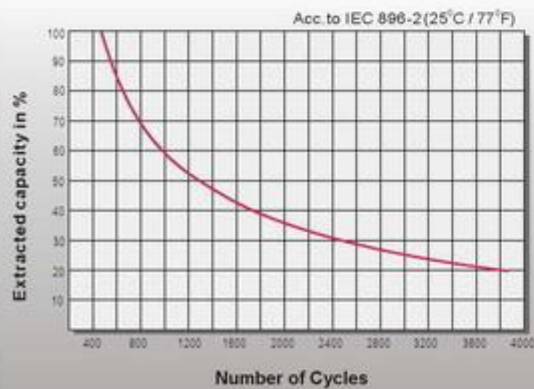
TEMPERATURE EFFECTS IN RELATION TO BATTERY CAPACITY



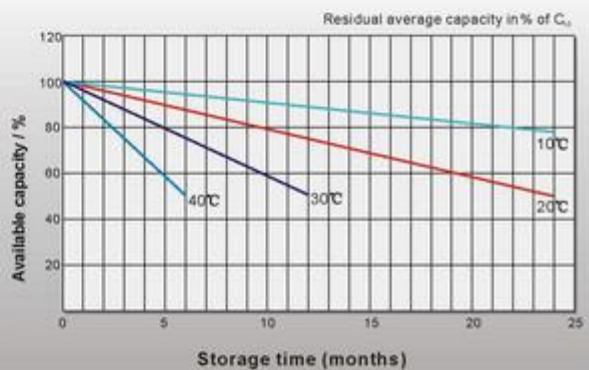
EFFECT OF TEMPERATURE ON LONG TERM FLOAT LIFE



CYCLE LIFE IN RELATION TO DEPTH OF DISCHARGE

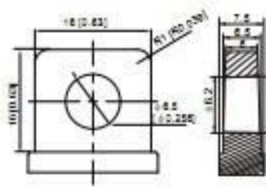


GENERAL RELATION OF CAPACITY VS. STORAGE TIME



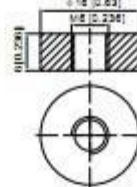
T5 Terminal

Lead
Torque: 3.9 – 5.4 N*m



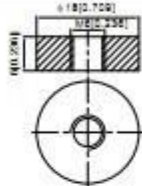
T6 Terminal

Brass Coated With Tin; Threaded Insert 6mm STUD
Torque: 3.9 – 5.4 N*m



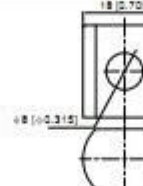
T7 Terminal

Brass Coated With Tin; Threaded Insert 6mm STUD
Torque: 3.9 – 5.4 N*m



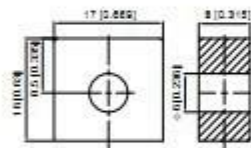
T9 Terminal

Lead
Torque: 11 – 14.7 N*m



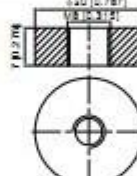
T10 Terminal

Lead
Torque: 3.9 – 5.4 N*m



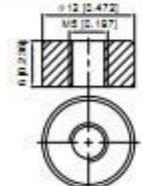
T11 Terminal

Brass Coated With Tin; Threaded Insert 6mm STUD
Torque: 11 – 14.7 N*m



T12 Terminal

Brass Coated With Tin; Threaded Insert 6mm STUD
Torque: 2.0 – 3.0 N*m



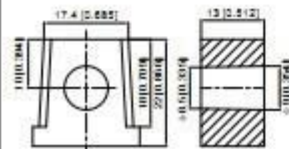
T13 Terminal

Brass Coated With Tin; Threaded Insert 6mm STUD
Torque: 3.9 – 5.4 N*m



T14-1 Positive

Lead
Torque: 11 – 14.7 N*m



T14-2 Negative

Lead
Torque: 11 – 14.7 N*m

